

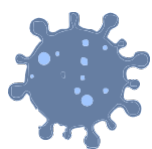


**Kemper County
School District**

COVID-19 School Response Manual

PreK – 12 | KCLE | KCUE | KCMS | KCHS | KCSS | CTE

*This manual is intended for use by administrators, teachers, staff,
and parents of Kemper County School District*



FIGHTING | THE WILDCAT WAY

CORONAVIRUS

Responding to COVID-19 at KCSD

There are many things to think about when having in-person instructions with our students or teachers and staff working in our buildings during the pandemic. Decisions about how to respond to COVID-19 should be made to protect both the immediate and long-term health and safety of students, teachers, staff, and visitors.

The goal of Kemper County School District is to provide a safe learning environment for students and a safe workplace for teachers and staff.

Based on what we know today, COVID-19 spreads very easily and quickly. At KCSD, we have in place numerous prevention measures in schools, buildings, and practices. However, schools, buildings, and practices cannot stop the spread of COVID-19 alone. It is critical for communities, families, and individuals to take personal responsibility and all of the necessary measures to lower the spread of COVID-19.

The two most important things you need to know are:

1. How to maintain a safe learning environment and protect your schools, buildings, and yourself.
2. What to do if a student, teacher, or staff is exposed to COVID-19, experience symptoms, or tests positive for the virus



COVID-19 School Response Manual

Why do we support in-person instruction? | Our Top 4 Reasons

- #1 - KCSD Schools provide safe and supportive environment
- #2 - KCSD Schools provide critical instruction and academic support that benefit students
- #3 - KCSD Students benefit from the interpersonal interactions they get in school
- #4 - When our schools are closed to in-person instruction, the education gap gets wider

What is the difference between isolation and quarantine?

- Quarantine
- You may end quarantine early
- Isolation

How to maintain a safe learning environment and protect your schools, buildings, and yourself?

- Who is considered part of our KCSD School Community?
- School Administrators
- Teachers/Staff
- Students
- Parents/Families
- Community members

What to do if a student, teacher, or staff is exposed to COVID-19, experience symptoms, or tests positive for the virus?

- 1-Anyone exposed to COVID-19
- 2-Experiencing symptoms of COVID-19
- 3-Anyone who tests positive to COVID-19

Case Investigations and contact tracing

- KCSD Schools will do their own contact tracing with the help of COVID-19 Response Team
- Each school has a COVID-19 point of contact (POC)
- The POC will notify students, teachers, and staff if they were exposed to COVID-19 at school
- POC will determine close contact exposures

Other Important Things to Know

- What information can the school disclose if someone in the school tests positive for COVID-19?
- Extra-curricular activities and COVID-19



“Keeping the main thing – the main thing – students, teachers, staff, and community.”

- **Hilute Hudson**, Superintendent of Education
Kemper County School District



Why do we support in-person instruction?

At KCSD, we believe schools play an essential role in the infrastructure and well-being of our students, our state, and our communities. Here are our **top four** reasons.

Our Top 4 Reasons



#1 - KCSD Schools provide safe and supportive environment.

- When our students are in school, they benefit from important routines, structure, and support services.
- KCSD Schools provide critical psychological, mental, and behavioral health services to children who may not have access to these services outside of school (such as psychological counseling, and other mental health and behavioral assessments).



#2 - KCSD Schools provide critical instruction and academic support that benefit students.

- KCSD Schools provide PreK-12 instruction and support students' academic development leading towards individual student success and achievements.
- In-person instruction allows teachers and students to communicate better. It also provides students with critical academic services which are not always available or accessible if students are not in school.





#3 - KCSD Students benefit from the interpersonal interactions they get in school.

- Social interaction for our students in grades PreK-12 is important not only for emotional wellbeing, but also for their language, communication, social, and interpersonal skills.
- KCSD Schools provide part of our students' foundation for socialization. When our students are out of school, they may be separated from their social network and peer-to-peer social support.
- Teachers are able to more actively participate in student learning and provide feedback.
- In-person instruction may be even more important for students with more learning needs. Children with disabilities may not have virtual access to the support they need, such as specialized instruction, related services, or any additional support required by their Individualized Education Programs (IEPs).



#4 - When our schools are closed to in-person instruction, the education gap gets wider.

- Some families may not be able to fully participate in distance learning because of computer and internet access issues or lack of support due to parent, guardian, or caregivers' work schedules. Families may rely on school-based services that support their child's academic success.
- The achievement gaps which existed before COVID-19 closures, such as disparities across income levels and racial and ethnic groups, could get worse and cause long-term effects on children's educational outcomes, health, and the economic wellbeing of families and communities.
- Students who rely on key services, such as school food programs, special education and related services (speech and social work services, occupational therapy), and after school programs can't access these programs and services when our school buildings are closed. Students are put at greater risk for poor health and educational outcomes.

What is the difference between quarantine and isolation?

DEFINITIONS

***Quarantine** is for people who may have been exposed to COVID-19, but aren't sick yet.*

***Isolation** is for people who have tested positive or who have symptoms of COVID-19.*

Quarantine

You should quarantine if you were exposed to COVID-19. This means you were in close contact with someone who has COVID-19 while that person was infectious. Close contact means you were closer than 3 feet.

People who are fully vaccinated do NOT need to quarantine after contact with someone who had COVID-19 unless they have symptoms. However, fully vaccinated people will get tested 3-5 days after their exposure and submit their negative test results to the district. Even if they don't have symptoms, fully vaccinated people must wear a mask indoors in public for 14 days following exposure.

Students, teachers, or staff (unvaccinated) who live with someone who tests positive for COVID-19 must quarantine for at least 10 days from the last day of exposure to the person who tested positive. You must finish the entire 10-day quarantine, even if you don't have symptoms or test negative.

Quarantine keeps you away from others for 10 days so you don't infect someone else without knowing it.



***Quarantine** is for people who may have been exposed to COVID-19, but aren't sick yet.
Isolation is for people who have tested positive or who have symptoms of COVID-19.*

Isolation

Isolation is used to separate people infected with COVID-19 from those who are not infected.

People who are in isolation should stay home until it's safe for them to be around others. At home, anyone sick or infected should separate from others, stay in a specific "sick room" or area, and use a separate bathroom (if available).

What to do

- Monitor your symptoms. If you have an emergency warning sign (including trouble breathing), seek emergency medical care immediately.
- Stay in a separate room from other household members, if possible.
- Use a separate bathroom, if possible.
- Avoid contact with other members of the household and pets.
- Don't share personal household items, like cups, towels, and utensils.
- Wear a mask when around other people if able.



SCENARIOS



1 What do I do if I have been around a Person with COVID-19

Anyone who has had close contact with someone with COVID-19 should stay home for 14 days **after their last exposure** to that person.

However, anyone who has had close contact with someone with COVID-19 and who meets the following criteria does **NOT** need to stay home.

- Someone who has been fully vaccinated and shows no symptoms of COVID-19. However, fully vaccinated people should get tested 3-5 days after their exposure, even they don't have symptoms and wear a mask indoors in public for 14 days following exposure or until their test result is negative.





2 I think or know I had COVID-19, and I had symptoms

You can be around others after:

- 10 days since symptoms first appeared **and**
- 24 hours with no fever without the use of fever-reducing medications **and**
- Other symptoms of COVID-19 are improving*

**Loss of taste and smell may persist for weeks or months after recovery and need not delay the end of isolation*

Note that these recommendations **do not** apply to people with severe COVID-19 or with weakened immune systems (immunocompromised).



3 I tested positive for COVID-19 but had no symptoms

If you continue to have no symptoms, you can be with others after 10 days have passed since you had a positive viral test for COVID-19.

If you develop symptoms after testing positive, follow the guidance above for “I think or know I had COVID-19, and I had symptoms.”





4 I was severely ill with COVID-19 or have a weakened immune system (immunocompromised) caused by a health condition or medication.

People who are severely ill with COVID-19 might need to stay home longer than 10 days and up to 20 days after symptoms first appeared. People with weakened immune systems may require testing to determine when they can be around others. Talk to your healthcare provider for more information. Your healthcare provider will let you know if you can resume being around other people based on the results of your testing.

People who are immunocompromised should be counseled about the potential for reduced immune responses to COVID-19 vaccines and the need to continue to follow current prevention measures (including wearing a mask, staying 6 feet apart from others they don't live with, and avoiding crowds and poorly ventilated indoor spaces) to protect themselves against COVID-19 until advised otherwise by their healthcare provider. Close contacts of immunocompromised people should also be encouraged to be vaccinated against COVID-19 to help protect these people.



“It is not enough for us to just go through the motions of our safety practices. It has to be our way of life, both in and out of school.”

- **Hilute Hudson**, Superintendent of Education
Kemper County School District



How to maintain a safe learning environment and protect your schools, buildings, and yourself



Who is considered part of our KCSD School Community?

- School Administrators
- Teachers/Staff
- Students
- Parents/Families
- Community members



School administrators:

- Decide who the COVID-19 **point of contact (POC)** will be at the school. The POC will work with the Kemper County COVID-19 Response Team on **contact tracing** in the school. It is a good idea for schools to have several employees who are trained as backups for this role.
- Provide any needed support or equipment to the POC so he or she can work with the COVID-19 Response Team on contact tracing.
- It is the **responsibility of the POC** to perform the contact tracing, communications, and notifications for the school. The POC may solicit help from the school nurse or other members of the COVID-19 Response Team.
- Understand the **privacy laws** that protect student, teacher, and staff personally identifiable information.
- Make sure all teachers, staff, and the school POC understand privacy laws that protect students, teachers, and staff.
- Must **continuously inform** the school nurse and superintendent of case progress.
- Provide a safe learning environment for students, teachers, and staff. This includes considering their emotional and social needs.
- Provide resources to parents and students who choose or need to participate in remote learning.
- Ensure safety cleaning protocols are performed.
- Enforce handwashing, wearing personal protective equipment, and maintaining social distancing.





Teachers and staff:

- Stay home from school or work if they feel sick, have symptoms of COVID-19, or are waiting for test results.
- Get tested if he or she has symptoms of COVID-19.
- Follow the isolation guidance if they test positive for COVID-19.
- Follow the quarantine guidance if they are exposed to someone with COVID-19.
- Understand privacy laws that protect students, teachers, and staff.
- Provide a safe learning environment for students by following their school plan for reopening.
- Prepare curriculum plans in case they have to isolate or quarantine.
- Encourage students to wash their hands, wear personal protective equipment, and maintain social distancing.



Students:

- Tell their parents or teacher if they feel sick or have symptoms of COVID-19.
- Stay home from school and other activities if they feel sick or have symptoms of COVID-19.
- Stay home from school and other activities if they are waiting for test results or test positive for COVID-19.
- Follow the quarantine guidance if they are exposed to someone with COVID-19.
- Wear a face mask at school and when they are around people they don't live with.
- Practice physical distancing as much as possible.
- Wash their hands with soap and water often.





Parents/Families:

- Check their child for symptoms of COVID-19 every day before school.
- Take their child's temperature every day before school. If their child has a temperature of 100.4 degrees F (38 degrees C) or higher, the child has a fever.
- Check their child's skin to see if it feels warm or is red, or ask if he or she has chills or is sweaty.
- Keep their child home from school if he or she feels sick, has a fever or other symptoms of COVID-19, or is waiting for test results.
- Get their child tested if he or she has symptoms of COVID-19.
- Follow the isolation guidance if their child or anyone who lives in their home tests positive for COVID-19.
- Follow the quarantine guidance if their child or anyone who lives in their home is exposed to someone with COVID-19.
- Tell the school if their child has a health condition that puts him or her at a higher risk for severe illness from COVID-19.
- Make sure their child, and everyone in their family, wears a face mask and **maintain social distance when they are around people they don't live with.**



Community members:

- Wear a face mask and maintain social distance when they are around people they don't live with.
- Stay home if they are sick, have symptoms of COVID-19, or are waiting for test results.
- Get tested if they have symptoms of COVID-19.
- Follow quarantine and isolation guidelines if they test positive for or are exposed to COVID-19.



***“Planning is only half the battle.
Effectively executing the plan
determines if you win or lose.”***

- **Hilute Hudson**, Superintendent of Education
Kemper County School District



What to do if students, teachers, or staff is: a) exposed to COVID-19; b) experience symptoms; or c) tests positive for the virus

A – Anyone exposed to COVID-19

Anyone who has had close contact with someone with COVID-19 should stay home for 14 days **after their last exposure** to that person.

However, anyone who has had close contact with someone with COVID-19 and who meets the following criteria does **NOT** need to stay home.

- Someone who has been fully vaccinated and shows no symptoms of COVID-19. However, fully vaccinated people should get tested 3-5 days after their exposure, even they don't have symptoms and wear a mask indoors in public for 14 days following exposure or until their test result is negative.



Symptoms of COVID-19



Fever



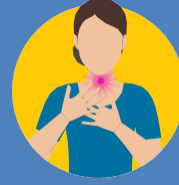
Cough



Shortness of Breath



Loss of Taste or Smell



Soar Throat



Muscle Aches

B – Anyone experiencing symptoms of COVID-19



ISOLATE for at least 10 Days and get a COVID-19 test

If you have tested positive, you should isolate (stay at home) until you have been:

- Fever-free for 24 hours (this means you did not use medicine to lower your fever), and
- It has been at least 10 days since you first got sick.

Some people may be asymptomatic. This means they have no signs or symptoms of the virus but can still spread it to others. Testing may be recommended for people without symptoms in certain situations, such as if there is a high number of cases in a school. Asymptomatic testing may also be done if a person is exposed to someone who tested positive for COVID-19.



C – Anyone who tests positive to COVID-19

ISOLATE for at least 10 Days Right Away

You can be around others after:

- 10 days since symptoms first appeared **and**
- 24 hours with no fever without the use of fever-reducing medications **and**
- Other symptoms of COVID-19 are improving*

**Loss of taste and smell may persist for weeks or months after recovery and need not delay the end of isolation*

Note that these recommendations **do not** apply to people with severe COVID-19 or with weakened immune systems (immunocompromised).



The time period for isolation is the amount of time someone is infectious and can pass the virus to other people. A student or teacher who tests positive for COVID-19 will be required to isolate at home for at least 10 days. This does not mean someone will only be sick for that amount of time. Some people who get COVID-19 are sick for a long time. The time period for quarantine may also be longer than 10 days if the person has ongoing exposures to COVID-19.



“Being open, honest and transparent is the only way we communicate.”

- **Hilute Hudson**, Superintendent of Education
Kemper County School District

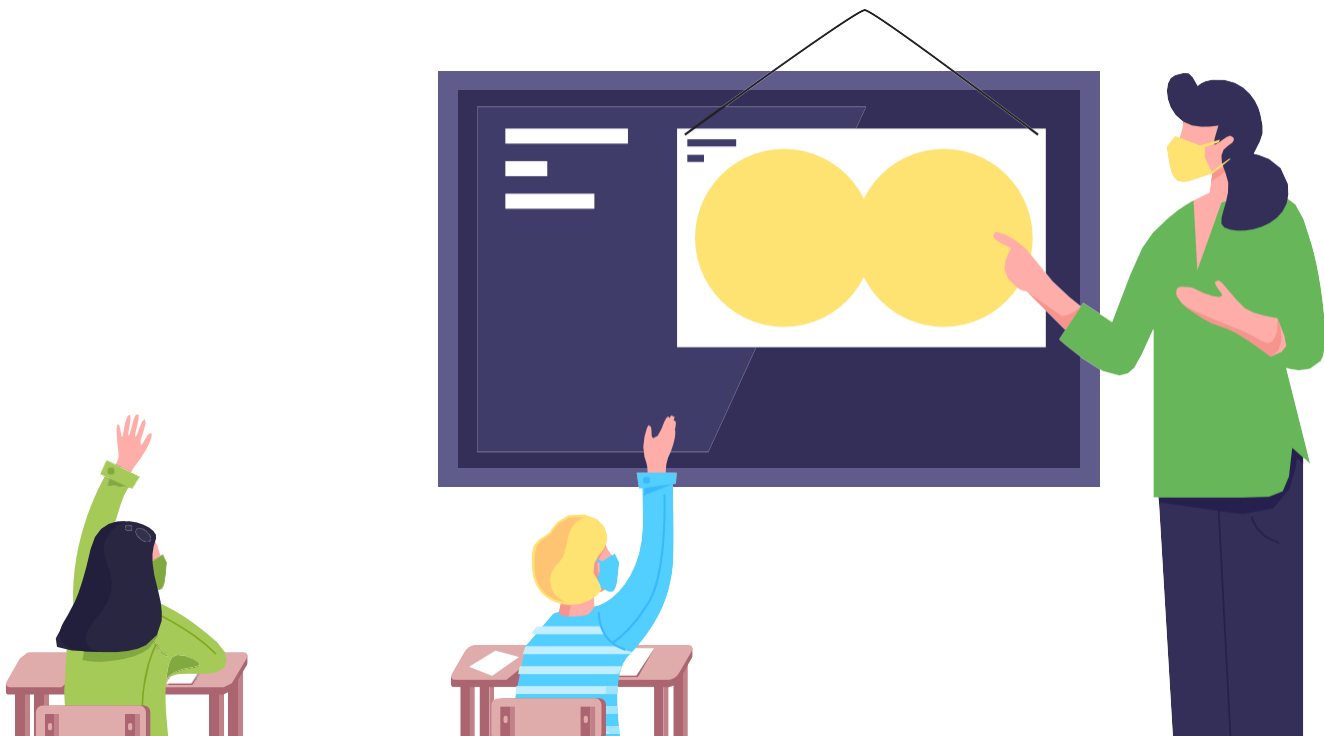


Case investigations and contact tracing

At KCSD, contact tracing is an important part of how we respond and stop outbreaks. Students, teachers, and staff who have been in close contact with someone who has COVID-19 are more at risk of getting infected and making others sick. Contact tracing is about finding the close contacts of someone who has COVID-19.

When we become aware that someone has tested positive for COVID-19 in our school district, we immediately contact the individual to conduct a case investigation. A **case investigation** is when we identify and interview someone who tested positive about possible exposures to COVID-19. At a minimum, we will ask where the individual has been while they were infectious, when their symptoms started, and who else may have been exposed.

Contact tracing happens after a case investigation is done. Contact tracing is the process we utilize to find who else may have been exposed to the virus and then we contact these individuals/families to let them know how long they should quarantine.





KCSD schools will do their own contact tracing with help from the COVID-19 Response Team.

Each school has a COVID-19 point of contact (POC).

The POC will work with the KCSD COVID-19 Response Team on contact tracing. The POC will notify eligible students, parents, teachers, and staff if they were exposed to COVID-19 at school. The POC will work closely with medical professionals, campus administrator, and transportation director (if required).

The POC should also be familiar with:

- Laws regarding student and employee privacy.
- Patient confidentiality and how to conduct interviews with someone who has been exposed or tested positive without violating confidentiality.
- Symptoms, exposure, and testing options for COVID-19.
- Advising on quarantine and isolation.
- Soft skill communications so trust can be built.

The POC will notify students, teachers, and staff if they were exposed to COVID-19 at school.

- 1 Following the completion of the contact tracing process, the POC will notify parents/families of students, teachers, or staff who may have been exposed to the person who tested positive. The POC will provide guidance on how long they should quarantine, how to check for symptoms, and when to consider testing. The POC will only notify people who were exposed to the person who tested positive while at school.
- 2 Schools will notify all person who are considered in close contacts, even if they meet the criteria to not quarantine, and provide instructions on what they should do. The POC is not responsible for contacting anyone who was exposed to COVID-19 outside of the school setting.
- 3 Only students, teachers, or staff who came into close contact with the individual who tested positive will be notified of a possible exposure.
- 4 **The POC and the school officials cannot release the private health information under any circumstances. This includes the name of the person who tested positive for COVID-19.**
- 5 The POC may need to share the identity of the person who has tested positive for COVID-19 with other school administrators or POCs to determine the identity of individuals who have been in close contact with the person who has tested positive for COVID-19 and the risk level of those individuals. Other school administrators and POCs must be notified that the information is confidential and cannot be redisclosed or shared with anyone else.



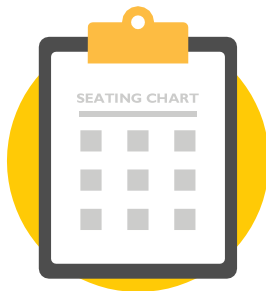
POC will determine close contact exposures

The point of contact (POC) will work closely with the medical professionals to determine who came into close contact at school with the person who tested positive.

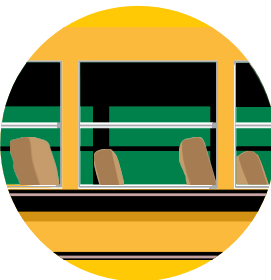
The POC will talk with a teacher or coach to understand who a student was in close contact with. The POC will inform the teacher or coach that the information is confidential and cannot be re-disclosed or shared with anyone else.



To protect the privacy of the person who tested positive as much as possible and help with contact tracing efforts, schools will:



Ask teachers to have written seating charts and student groupings in advance for classroom activities.



Gather assigned seating on buses if applicable. This includes if a bus is used to take students to an activity, field trip, or sports events.



Gather written plan and roster from coaches for activities, practice, and games that include student names and groupings.

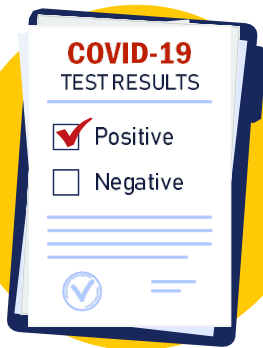


OTHER IMPORTANT THINGS YOU SHOULD KNOW

- **Hilute Hudson**, Superintendent of Education
Kemper County School District



What information can a school disclose when someone in the school test positive for COVID-19?



- A school may disclose that someone at the school tested positive for COVID-19, as long as the facts alone or in combination with other information released, do not identify the person.
- The school may not publicly release the personal identification information of the student such as the student's name or whether they tested positive for COVID-19.
- The school may not publicly release the name of a teacher or employee who tested positive for COVID-19.

Extracurricular activities and COVID-19

Extracurricular activities are important to our students, their families, and our community. This is why we are asking students, schools, families, and community members to take extra precautions to slow the spread of COVID-19 in their communities. It will take everyone working together and taking precautions to make sure students get to participate in these activities.



Privacy laws and how student, teacher, and employee information will be protected

It is important to make sure administrators, employees, and parents understand privacy laws and how they apply during the COVID-19 pandemic.

What laws protect student, teacher, and employee privacy?

Public health laws

A person's test result is considered private health information and is kept confidential by public health. Public health agencies are allowed, by law, to disclose the name of a person who tested positive to a school if it is necessary to protect the health and safety of students, teachers, and employees. The information that is disclosed by the health department to the school is strictly confidential and protected under Section 25-61-1 and following of the Mississippi Code Annotated for the Mississippi Public Records Act.



If the information is about an employee, Mississippi Department of Employment Security makes every effort to ensure compliance with applicable Federal law, including, but not limited to, The Privacy Act of 1974, The Paperwork Reduction Act of 1995, and The Freedom of Information Act.

The POC must maintain the confidentiality of the employee while acquiring information necessary to assist the health department to contact others who may have been exposed. The POC must emphasize the importance of not re-disclosing the information to anyone else and that all notifications will be made by the POC or the health department.

If the information is about a student, the information, once shared with the POC becomes protected by Family Educational Rights and Privacy Act (FERPA). The POC must ensure that this information remains confidential and is shared only with those who have a need to know to assist the POC in carrying out the responsibility to notify others who may have been exposed. The POC must emphasize the importance of not re-disclosing the information to anyone else and that all notifications will be made by the POC or the health department.





The POC and the school officials cannot release the private health information disclosed by public health under any circumstances. This includes the name of the person who tested positive for COVID-19.

The POC may need to share the identity of the person who has tested positive for COVID-19 with other school officials to determine the identity of individuals who have been in close contact with the person who has tested positive for COVID-19 and the risk level of those individuals. This must be limited to the least number of school officials possible and each must be notified that the information is confidential and cannot be redisclosed or shared with anyone else.

Family Education Rights and Privacy Act

The Family Educational Rights and Privacy Act (FERPA) is a federal law that protects the privacy of student education records. FERPA gives parents certain rights about their child's education records. When a student turns 18 years old or if a student attends a postsecondary institution (such as a college) at any age, the student becomes an "eligible student" (a student who is 18 years old or a student of any age who has taken postsecondary courses). This means the student, not the parent, becomes the only person who has rights to the student's educational record. In some cases, FERPA information can still be provided to the parents of eligible students without a written consent.

FERPA says that in most cases, a parent or eligible student must give his or her written consent, or permission, before a school can give out any personally identifiable information (PII) from an education record.



Sample Communication to Parents/Guardians

August XX, 2021

Dear Parent/Guardian,

You or your child have been identified as a close contact to a case of COVID-19 in the school setting. A close contact is defined as any individual within 3 to 6 feet of the person while he/she is contagious. The contagious period is 48 hours before to 10 days after symptoms started (or 48 hours before to 10 days after test if there were no symptoms). Based on this close contact the following instructions are provided.

For 10 days following potential exposure, you, or your child:

- Will be excluded from the school setting for a minimum of 10 days after last exposure to the case of COVID-19.
- Should remain quarantined at home for 10 days after your (or your child's) last exposure to the case.
- Are instructed to get tested for COVID-19 3-5 days following your exposure, even if you do not have symptoms. MSDH maintains a list of testing sites on the website at <https://msdh.ms.gov> (Please let your provider know that you have been exposed before you go in for testing).
- Should monitor for symptoms and take your (or your child's) temperature twice a day for a minimum of 10 days from your last exposure. If at any point your (or your child's) temperature is 100°F or more, feel like you are developing fever, or start having any of the symptoms (e.g., fever, cough, shortness of breath or a new loss of taste or smell) contact your healthcare provider for evaluation and retesting if indicated.
- May return to school following the 10-day quarantine and school exclusion period if no symptoms develop. Students, teachers, and staff who are not fully vaccinated and are identified as close contacts to COVID19 should be in Quarantine for a full 10 days.

Thank you for your continuous support and cooperation,



Safe Return to In-Person Instruction and Continuity of Service Plan

Academic Programming:

1. The district will ensure continuity of services for the academic needs of students by returning to face-to-face instruction for all students while providing virtual instruction when it becomes necessary to do so (COVID exposure, positive COVID test, medically documented need, prolonged injury/illness, inclement weather).
2. The district's plan for safely scheduling face-to-face instructional delivery to students when school opens includes standards-based instruction, accelerated learning opportunities, intensive tutoring, after-school enrichment and remediation, ACT preparation.
3. The district's contingency plan for scheduling instructional delivery to students should the district or school(s) have to close due to an outbreak (i.e., Covid, influenza) will be to transition to remote/distance, synchronous, asynchronous learning via online learning platform (example: Google Classroom, recorded, thumbdrive, etc) for the duration of the outbreak to ensure the safety of students and staff.
4. The district will monitor student progress at the elementary, middle, and secondary level, for both in-person students and students who may be receiving remote/distance instruction due to an underlying medical condition through classroom homework, quiz, and test grades, progress monitoring, benchmark assessments.
5. The district will ensure continuity of staff observation and feedback cycles, for both in-person and remote/distance instruction through in-person classroom observations for face-to-face instruction and through participation in online learning platforms for remote/distance instruction.
6. The district will gather feedback from staff about instructional programming and needed supports through faculty meetings, PLCs, informal conversations, surveys, and instructional coach observations.

Operations:

1. Upon arrival to campus each day, students will undergo temperature monitoring before being allowed to enter the building. Social distancing will continue to be enforced. Students will report directly to the bus or personal transportation. Students will not be allowed to linger in hallways or on campus.
2. Parents are encouraged to bring their students to school, but transportation will be provided should this not be an option. To promote safety, all students will have their temperatures checked prior to boarding the buses. Social distancing and face masks will be required while on the buses, and seating assignments will be enforced. Also, all buses will have a bus monitor (personnel) to ensure safety protocols are followed. Bus cleaning and sanitation procedures will be strictly followed according to the CDC guidelines.
3. The district will provide meals to students through each school's cafeteria. Students will report to the cafeteria for breakfast upon arrival to school each morning, and they will report to the cafeteria for lunch during their assigned lunch period. In the event that remote/distance learning becomes necessary to prevent virus spread, meals may be provided or delivered to students.
4. The district's academic calendar for the 2021-2022 school year - attached



Family and Community Support:

1. The district will provide academic support to families by providing online instruction for students, as well as providing tutorials for parents to learn how to assist students with class log-in procedures. Thumb Drives with pre-loaded assignments also provided for students with limited or unstable internet access.
2. The district will gather feedback from families of diverse student groups about instructional programming and needed supports through parent meetings and surveys.

Communications:

1. The district will communicate regularly with families to promote healthy behaviors to reduce spread via newsletters, AIMS messages, School Status messages, and social media posts.
2. The district will communicate health and safety issues or necessary changes to the district's regular operating schedule by utilizing AIMS messages, School Status messages, television and radio reports, and social media posts.

Health and Safety:

1. The district has adopted the following safety protocols regarding CDC safety recommendations. We are implementing the following safety protocols for our schools and buildings:
 - i. Screening for COVID-19 symptoms is mandatory every day for all staff, students, parents and visitors prior to entering our buildings.
 - ii. Personal Protective Equipment (PPE - face masks and face shields) will be required if less than 6 feet apart. PPE will be provided to all staff and students.
 - iii. Classroom sizes will be restructured to promote social distancing and safety guidelines by the CDC.
 - iv. Daily cleaning of classrooms, buildings, offices, buses and high touch point areas will be strictly followed according to the CDC guidelines.
2. The district will address the social, emotional, mental health, and other needs of students and staff through school counselors, Student Support Services, behavior specialist
3. Specific steps the district has taken to address air quality within school facilities include the purchase and installation of air purifiers on each campus.
4. The district will continue expecting families to screen students each day before school.
5. The district will continue to conduct temperature checks for staff and students upon arrival.
6. The district requires masks to be worn by students and adults while on buses. The district recommends that all students and adults who are not fully vaccinated wear masks while on campus.
7. The district recommends students of all ages and grades wear masks if not fully vaccinated.
8. The district's comprehensive plan for regularly cleaning the following areas:
 - i. Buildings, classrooms, and common areas
 - a. Buildings are fogged on a daily basis
 - b. Classroom desks and shared surfaces/devices are cleaned after each class of students, and rooms are sanitized at the end of each day through fogging.
 - ii. Food and nutritional service areas are cleaned and sanitized after each meal rotation and at the end of each day.
 - iii. Bus cleaning and sanitation procedures will be strictly followed according to the CDC guidelines.
 - iv. Areas associated with co-curricular and extra-curricular activities will be thoroughly cleaned and sanitized between practices and competitions/games.
9. The district will identify the needs of students and staff with underlying health conditions through self-reporting or medical documentation. Needs of students and staff with underlying health conditions will be addressed as directed by medical professionals.



10. Within the district, the COVID Response Team, school nurses, and school safety officers are responsible for overseeing health and safety.
11. The district intends to ensure the safety of students, staff, and spectators involved in co-curricular and extra-curricular activities (athletics, band, choir, etc.) by enforcing all CDC guidelines, Mississippi Department of Health mandates, social distancing, sanitizing procedures, and requiring PPE.

Technology:

1. The district will utilize technology to enhance in-person learning and support remote learning for students as needed by providing and maintaining wireless internet access at each school site and via community hotspots throughout the district, and by providing students with wireless devices for use at school and home.
2. The district will identify the professional learning needs of staff in utilizing technology to enhance in-person learning and support remote learning through needs assessment surveys and ongoing professional development to meet the technology learning needs of staff.



Kemper County Schools District Calendar

2021-2022

Events / Holidays						
Date		Description				
August 2-5		Professional Development				
August 6		Students' First Day				
September 6		Labor Day Holiday				
September 13		Progress Reports Issued				
Sept 30 - Oct 7		1st 9 Weeks/Benchmark Exams				
October 8		60% day Students/1/2 day Prof Dev				
October 11		Fall Break				
October 12		Professional Development/Data				
October 18		1st 9 Weeks Report Cards				
November 15		Progress Reports Issued				
November 22-26		Thanksgiving Holiday				
December 15-22		2nd 9 Weeks/Benchmark Exams				
December 22		60% day for Students				
Dec 23 - Jan 7		Christmas Holidays				
January 10		Professional Development				
January 11		Second Semester Begins				
January 11		Report Cards Issued				
January 17		MLK Holiday				
February 14		Progress Reports Issued				
February 18		60% day Students/1/2 day Prof Dev				
February 21		Presidents Day/Weather Day				
March 7-11		3rd 9 Weeks/Benchmark Exams				
March 14-18		Spring Break				
March 23		Report Cards Issued				
April 15		Good Friday Holiday				
April 18		Easter Holiday/Weather Day				
April 22		Progress Reports Issued				
May 20		Graduation				
May 26		60% Last Student Day				
May 27		Last Teacher Day				